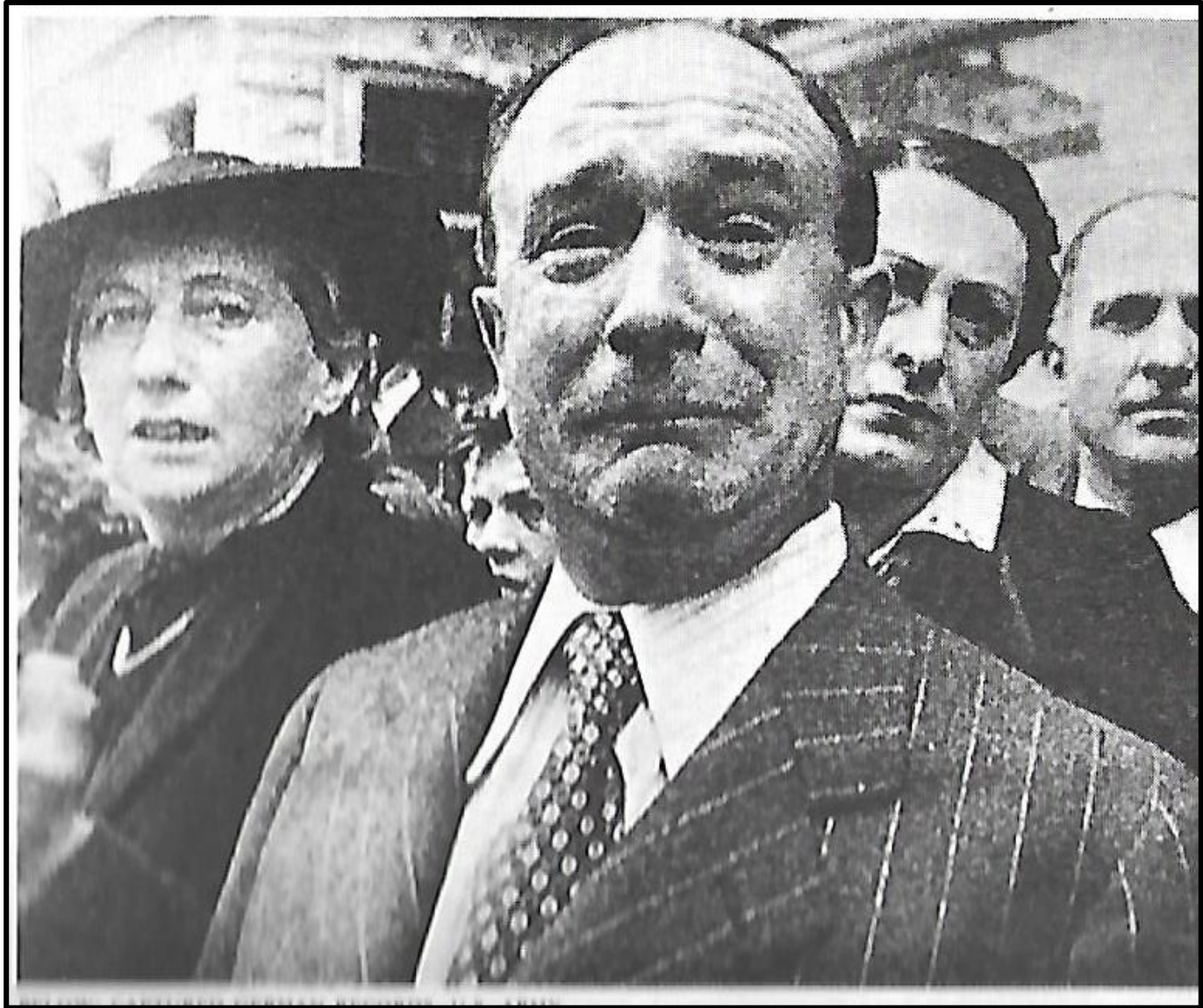
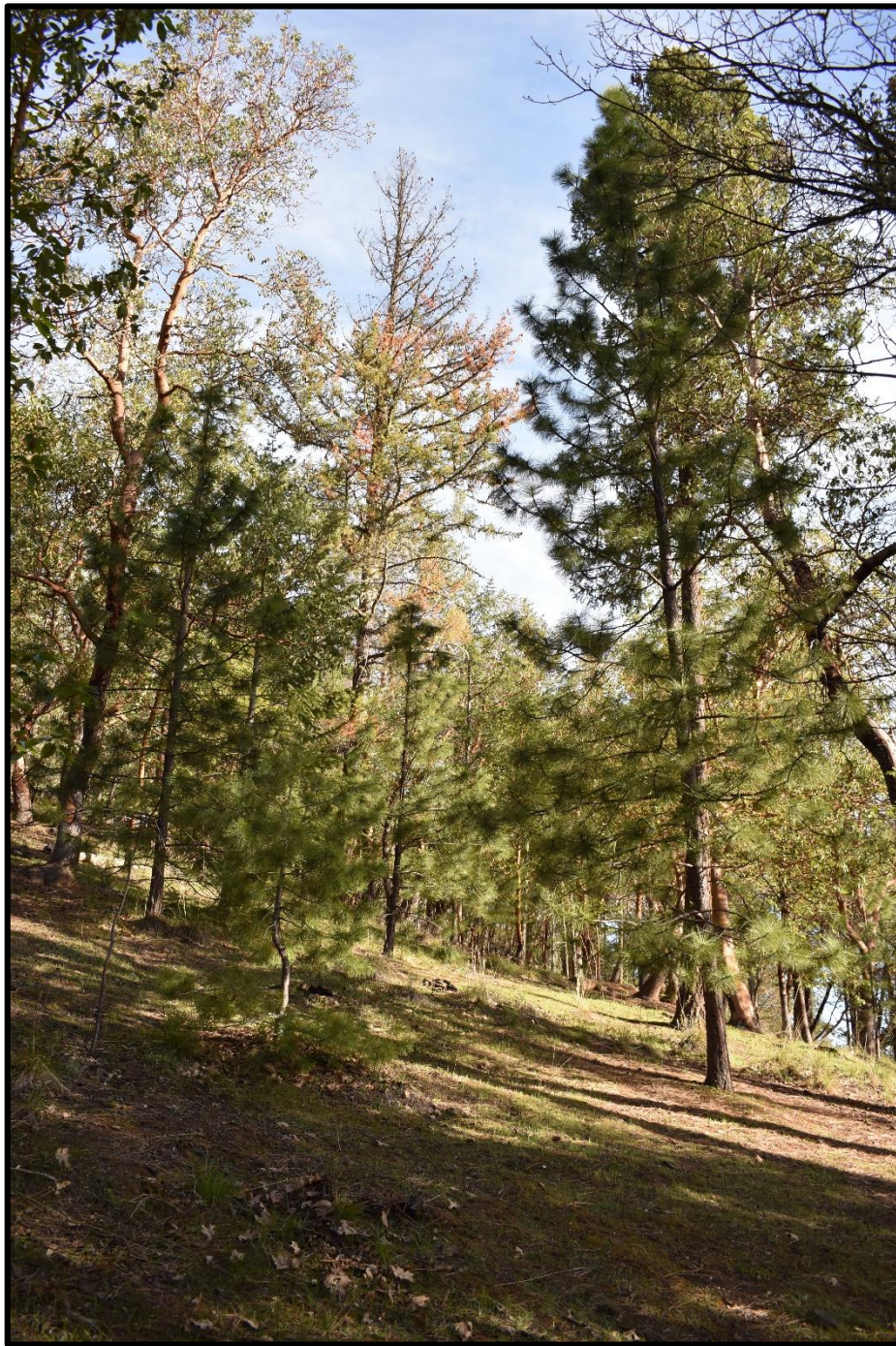


Other Agents

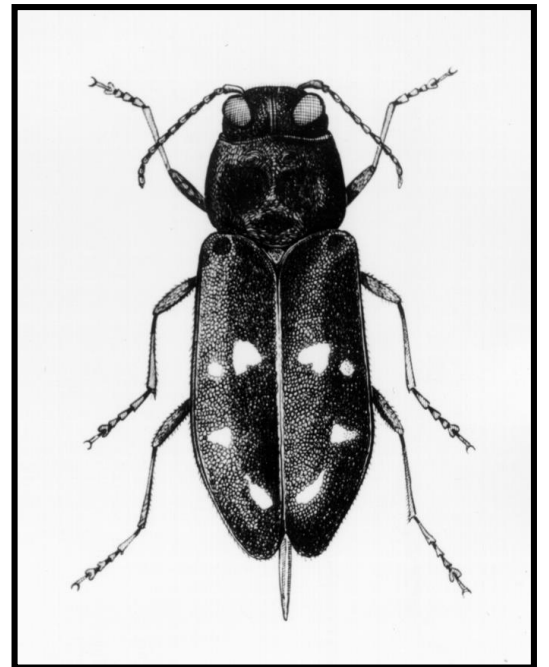
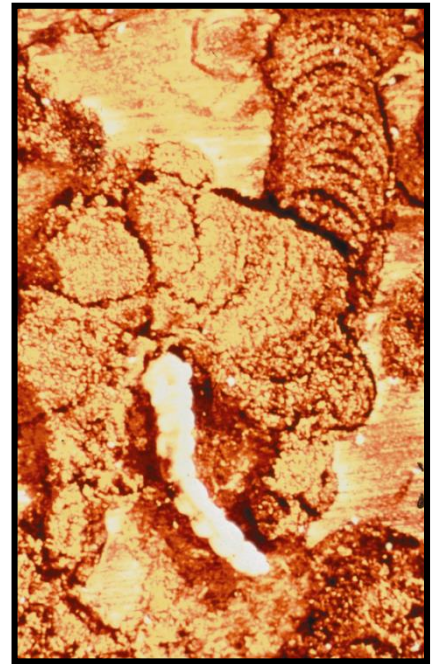
of dieback and mortality currently
affecting low elevation Douglas-firs in
Southwest Oregon



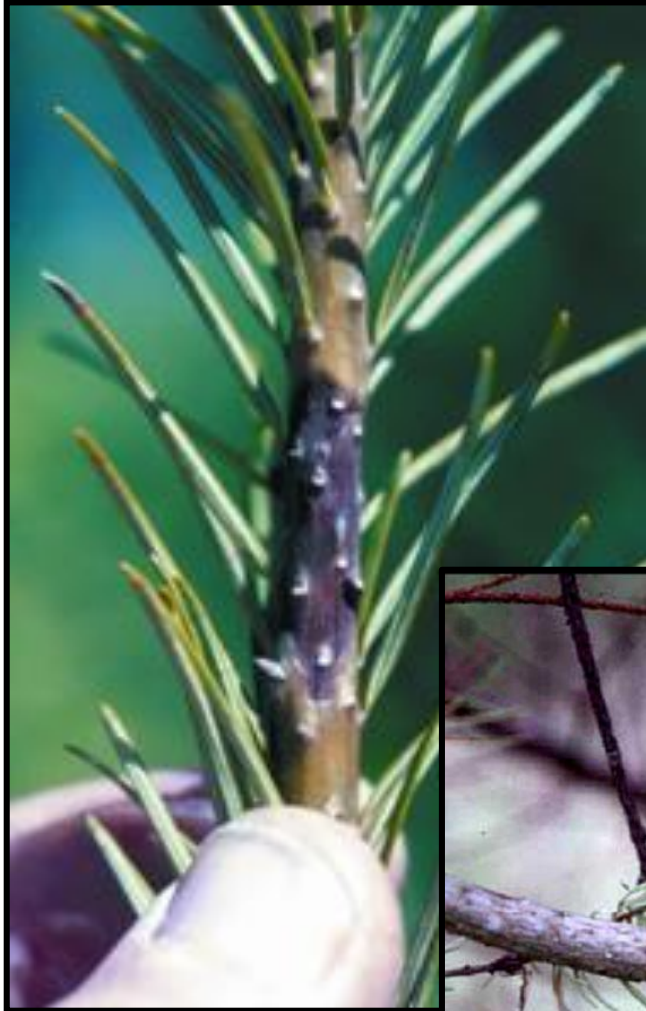








1. Douglas-fir Top, Stem, and Branch Mortality



Due to
Canker fungi











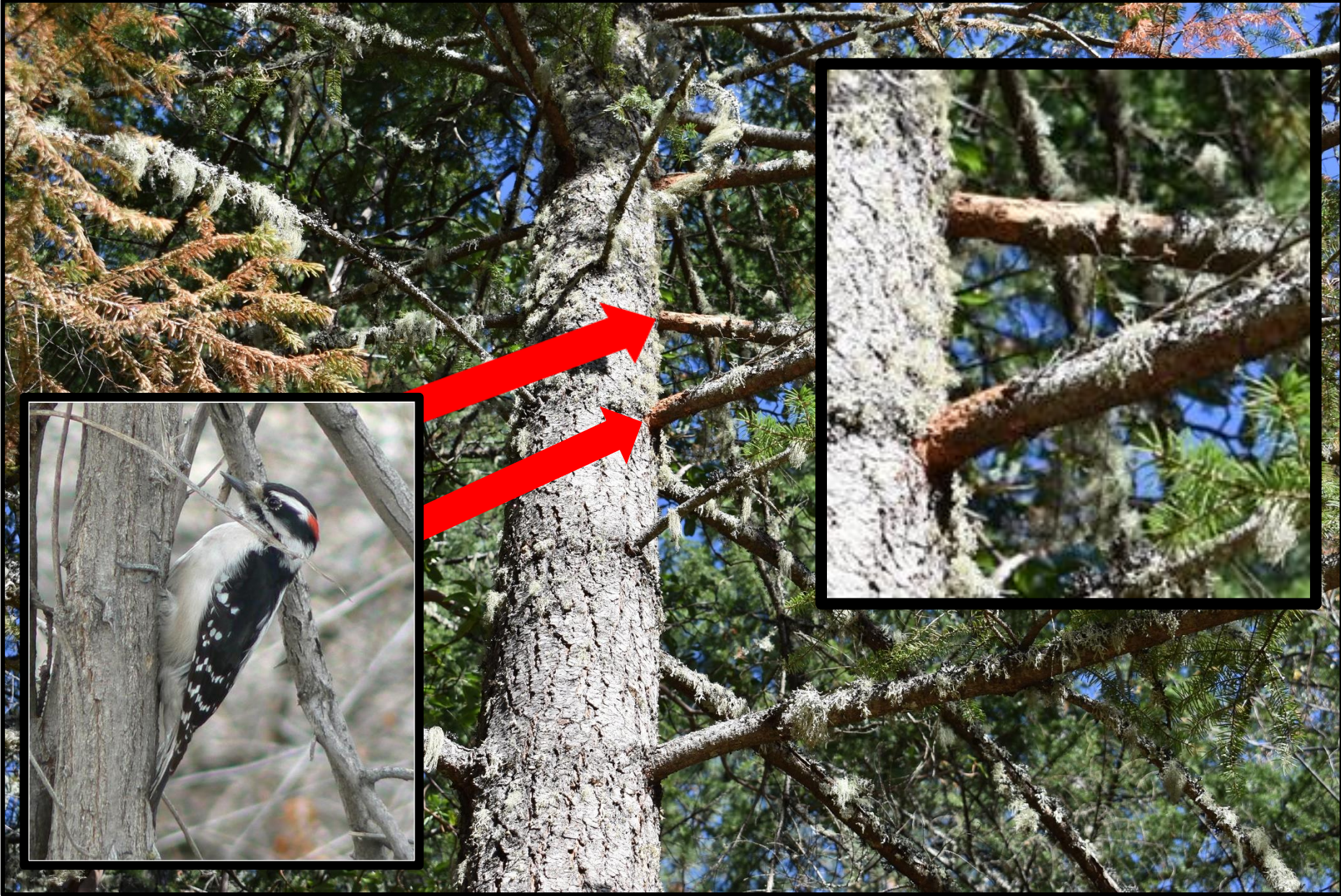
2. Douglas-fir Top, Stem, and Branch Attacks

Due to “Secondary” Beetles

- Bark beetles (“itty-bitties”)
- Weevils
- Woodborers







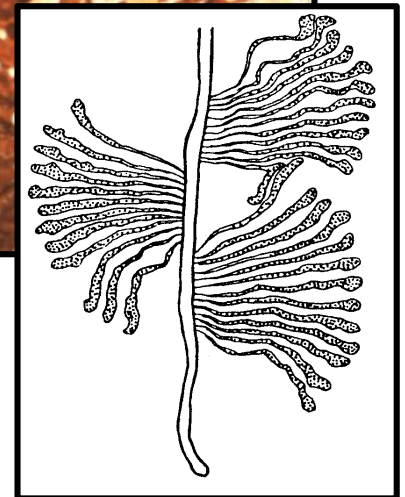




So What's Actually Killing the Douglas-firs??

Current decline and mortality is due to a complex of formerly unprecedented abiotic factors and attacks by so-called “secondary” biotic agents.

“The Rise of the Secondaries!!”



Douglas-fir Beetle



