

The Oregon State University Extension Master Gardener™ program educates Oregonians about the art and science of growing and caring for plants. We are in 27 counties across the state, and train thousands of Master Gardener volunteers. OSU Extension Master Gardeners are volunteer educators, neighbors, and on-the-ground researchers who serve their community with solid training in science-based, sustainable gardening and a love of lifelong learning.

## MISSION

Cultivating resilient and healthy communities throughout Oregon through sustainable horticulture education and gardening projects that are rooted in science and that are supported by OSU Extension volunteers.

## VISION

We provide accessible and equitable education programs that nurture life-long learners and volunteers who can expand the reach and impact of science-based sustainable gardening practices to benefit all Oregonians.



**Oregon State University**  
**Extension Service**  
**Master Gardener™**

[extension.oregonstate.edu/mg](https://extension.oregonstate.edu/mg)

*Oregon State University Extension Service prohibits discrimination in all its programs, services, activities, and materials on the basis of race, color, national origin, religion, sex, gender identity (including gender expression), sexual orientation, disability, age, marital status, familial/parental status, income derived from a public assistance program, political beliefs, genetic information, veteran's status, reprisal or retaliation for prior civil rights activity. (Not all prohibited bases apply to all programs.)*

## GUIDING VALUES

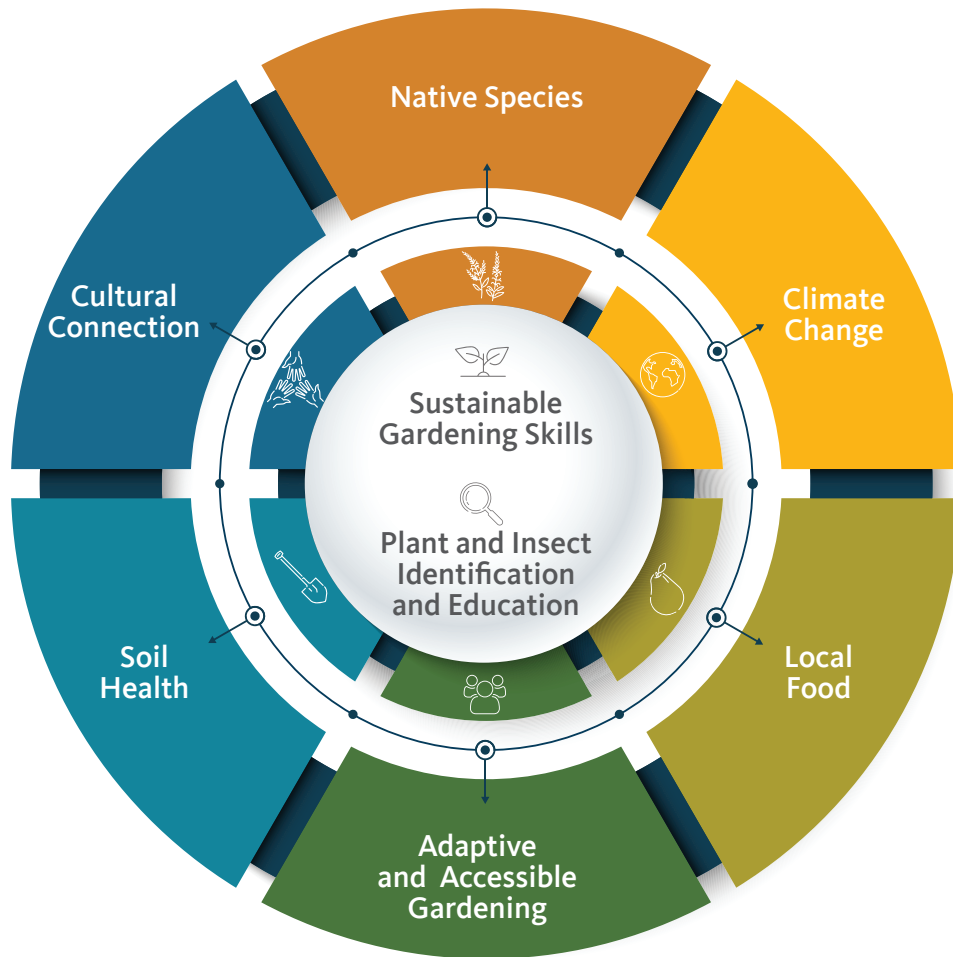
**We are connected to Oregon State University, and use both science and local knowledge to inform our community engagement, educational outreach, and horticultural expertise.** We strive to make the resources of Oregon State University accessible to all and inspire and encourage lifelong curiosity and learning through continued scientific exploration and discovery.

We are connected to our local communities, and their needs drive the work of our program. We are inclusive, where everyone is welcome, respected, valued and supported. We know that collaboration and partnership with our communities, community organizations, and neighbors make us stronger and that together, we create positive change.

We are connected to our earth, and strive for stewardship and sustainability through horticultural best practices and a conscientious approach to volunteer work in alignment with our program priorities. We aim to improve not only the lives of the people within our communities, but also the land which sustains us, and future generations.

We are driven by a sense of fun, wonder and curiosity for the natural world and a commitment of service to our local communities.

# Program Priorities



## **SUSTAINABLE GARDENING SKILLS**

Teaching horticulture principles and practices that are grounded by research or recognized as best practices.



## **PLANT AND INSECT IDENTIFICATION AND EDUCATION**

Serving as a public resource for diagnosing plant and insect problems of our region.



## **NATIVE SPECIES**

Promoting native species conservation and addressing concerns regarding invasive species and invasive species management, promoting ways to help native bees and other pollinators thrive in home and community landscapes.



## **CLIMATE CHANGE**

Teaching ways to create resilient landscapes that are adapted to our changing climate, promoting water-wise gardening practices to conserve water and minimize polluted runoff.



## **LOCAL FOOD**

Encouraging the use of sustainable techniques for successfully growing local food, food access and food security.



## **ADAPTIVE AND ACCESSIBLE GARDENING**

Promoting and educating ways to ensure access to gardening for all ages, abilities and communities.



## **SOIL HEALTH**

Growing knowledge, care and protection of the amazing ecosystem of soil health and its value to our personal health.



## **CULTURAL CONNECTION**

Partnering with local community groups to create access to plants for physical, mental and spiritual health and wellbeing, and honoring and uplifting cultural practices and beliefs.



**Oregon State University**  
**Extension Service**  
**Master Gardener™**