



Cutworm & Armyworm Identification

- quick guide reference -

TRUE ARMYWORM

Mythimna unipuncta

Prefers grasses and corn, but can be polyphagous. Alternate hosts include: brassicas, millet, common bean, pea, clover, radish, corn, and sunflower

Repeating lateral stripes of different colors, the ventral-most section may have a pinkish hue. Each proleg has a black tip. The head is small and eyes have a strong netting pattern. Feeds and moves across landscape in large groups



GLASSY CUTWORM

Apamea devastator

All grasses, especially fescue, reed canary grass, orchardgrass, and corn. If populations are high enough, feeding on cabbage, lettuce, bean, beets, and radish can occur

Translucent, whitish coloring, devoid of any identifying marks. Head is reddish-brown with a darkened plate on the thorax (just behind the head). Glassy cutworms feed near the soil surface, and also chew on roots and vegetative parts underground

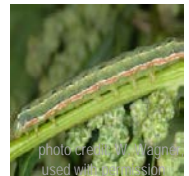


CLOVER CUTWORM

Anarta trifolii

Clover and other legumes, peas, common lamb's quarters, beets, quinoa, lettuce, cabbage, elm, poplar, weedy mustards. More common East of the Cascades

Green or dark forms possible, a yellowish band is evident on the sides of the back, with black dashes just above it, spiracles surrounded by dark. Dorsally brown to gray, with a central line that can vary from faint pink to bright yellow



VARIEGATED CUTWORM

Peridroma saucia

Generalist feeders, larvae documented on 100+ species of plants including clover, dock, sugarbeet, and extensive damage to mint

Large and 'bulky', reddish-brown. Black dashes possible. In late stage larvae, a series of yellow dots is evident, but they do not extend the entire length of the body. Winter cutworm looks similar but does not have yellow spots on back



BLACK CUTWORM

Agrotis ipsilon

A generalist feeder, common on corn and herbaceous vegetables, but known to feed on 50+ plants, incl. sugarbeet

Overall 'greasy' appearance, body a uniform color, one may see pairs of uneven black spots on the back of each segment. Head is brownish with spots or netting pattern on the eyes, depending on age

