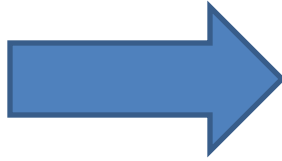
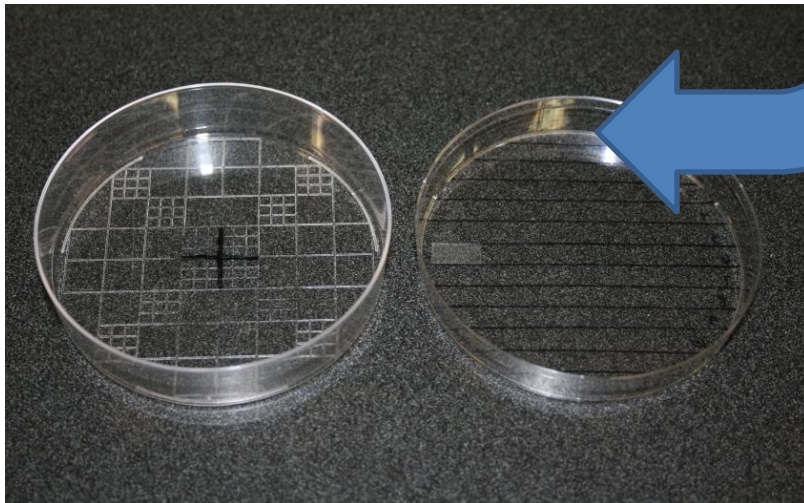


Leaf Washing Technique for Quantifying Rust Mite Infestation



Step 1: Collect leaves from mid- to upper canopy from vines in mid to late summer, making sure each leaf goes into its own re-sealable plastic bag. This same sampling may be conducted with small shoots early in the growing season.

Step 3: Snip the corner of the bag with scissors to release the alcohol solution into a 15 cm petri dish. Dishes with grids on the underside assist with the task of counting mites.



Step 2: Cut the leaf tissue into ~1 inch squares and place back into the original bag. Add 45 to 50 ml of 35% isopropyl alcohol to the bag, seal, and shake vigorously for 30 seconds.

Step 4: Count the number of rust mites (and other pests/beneficials) present in the sample by placing under a stereo microscope. Be sure to have a data sheet to record your observations, including leaf symptom prior to extraction, counts of rust mites, thrips, or predatory mites.

